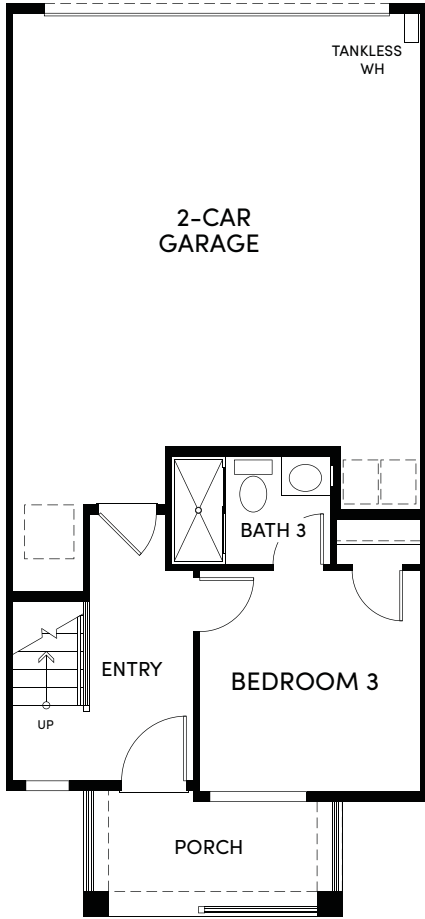
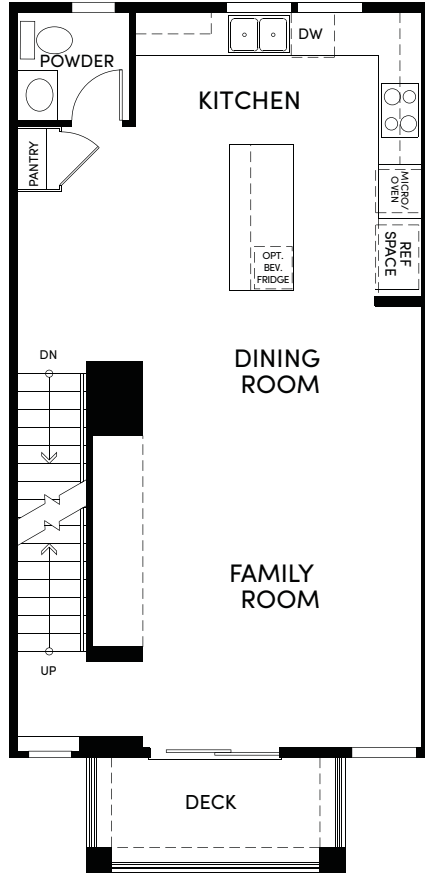


RESIDENCE 1T - 3 BEDROOM + 3.5 BATHS • 1,614 APPROX. SQ. FT.

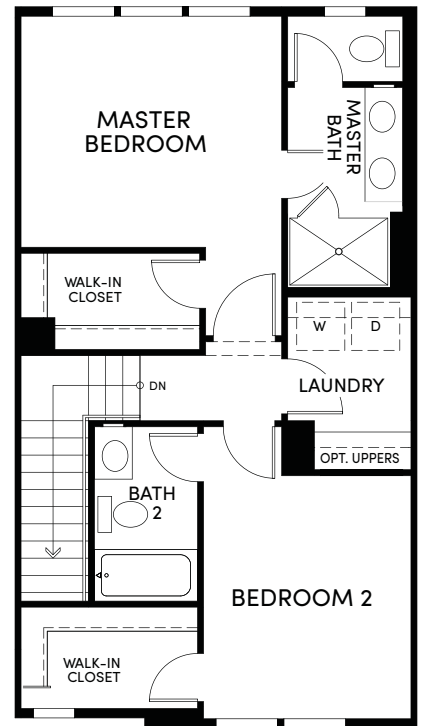
at thea



FIRST FLOOR

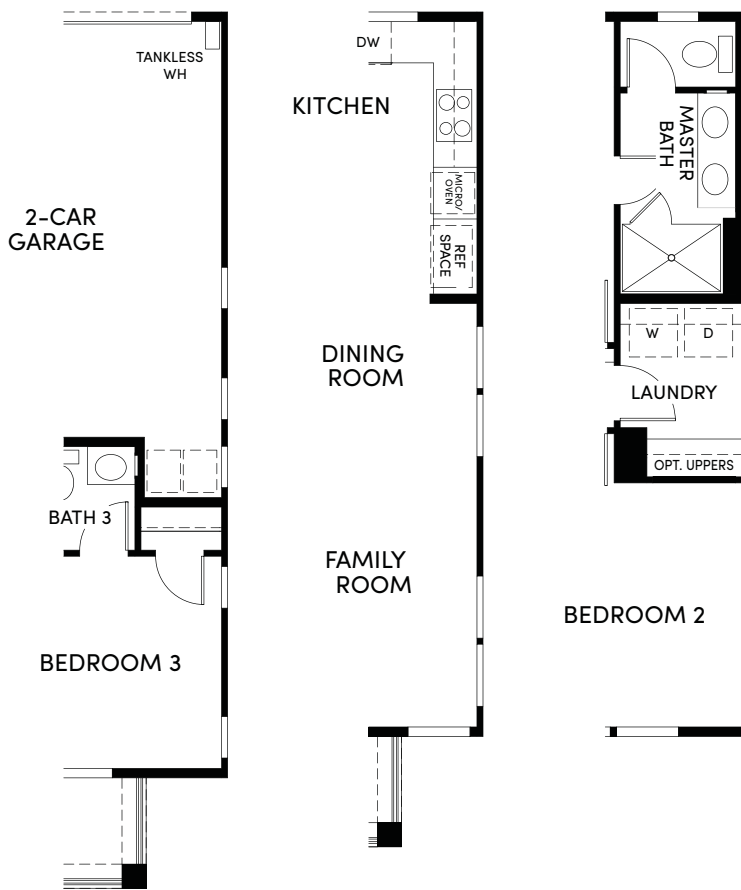


SECOND FLOOR



THIRD FLOOR

1



FIRST FLOOR

SECOND FLOOR

THIRD FLOOR

1A-END

1: LOTS 2, 6, 8, 11, 13, 15, 22, 24, 26, 30



montecito



Located at 333 Rengstorff Ave.

Montecito on **Thea Circle** will offer

31 THREE STORY ATTACHED HOMES

3-4 BEDROOMS & 3-3.5 BATHS

in 1,614 -1,893 sq. ft. approx.

Located at 2054 Montecito Ave.

Montecito on **Marquette Circle** will offer

52 THREE STORY ATTACHED HOMES

2-3 BEDROOMS & 2.5-3.5 BATHS

In 1,406 -1,708 sq. ft. approx.

BOTH COLLECTIONS WILL OFFER A CENTRAL COMMON AREA WITH EXCITING AMENITIES

About the Area: Montecito in **MOUNTAIN VIEW** is central to a vast array of TOP EMPLOYERS: Google, Microsoft, LinkedIn, Kaiser and El Camino Hospital to name a few. As well as CONVENIENT COMMUTE ACCESS to Caltrain, Light Rail and major freeways. NEARBY PARKS include Monta Loma School Park, Thaddeus Park, Rengstorff Park & Rex Manor Playground.

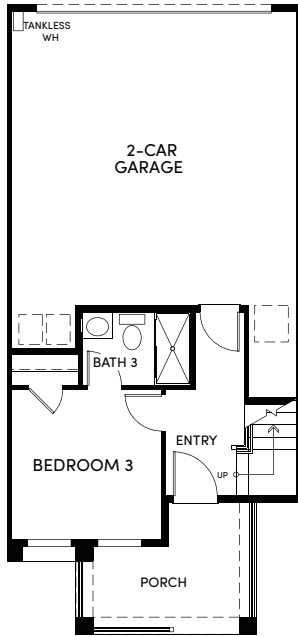
SUMMERHILL HOMES™

WWW.SUMMERHILLHOMES.COM

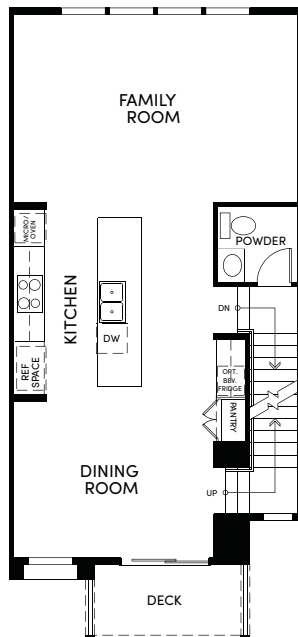
MONTECITOSALES@SHHOMES.COM • 650.269.7388 • SALES STUDIO: 883 N. SHORELINE BLVD, SUITE B100 • COMMUNITY: 2054 MONTECITO AVE. MOUNTAIN VIEW, CA 94043

SummerHill Homes reserves the right to alter plans, specifications, features, prices, and other information described in this brochure without notice or obligation. All renderings are artist's conception. All dimensions and sizes are approximate and may vary. Not to scale. Locations, distances, and layouts are subject to change. Ask the Community Sales Team for details. All information contained in this brochure is qualified in its entirety by the Seller's Information Statement, which is incorporated herein by this reference. BRE# 01301389 1.2020

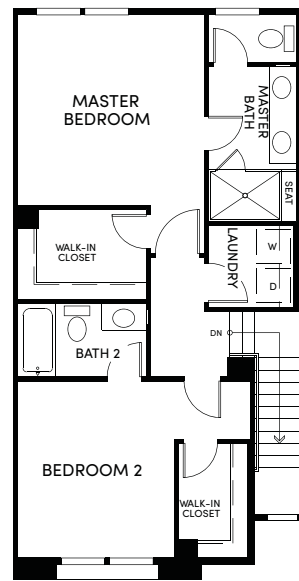




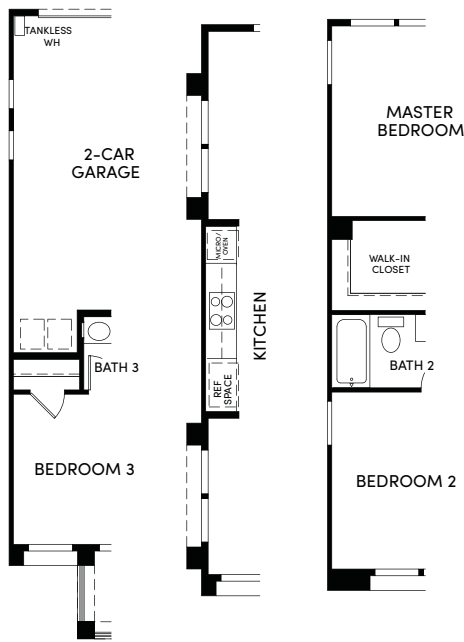
FIRST FLOOR



SECOND FLOOR



THIRD FLOOR

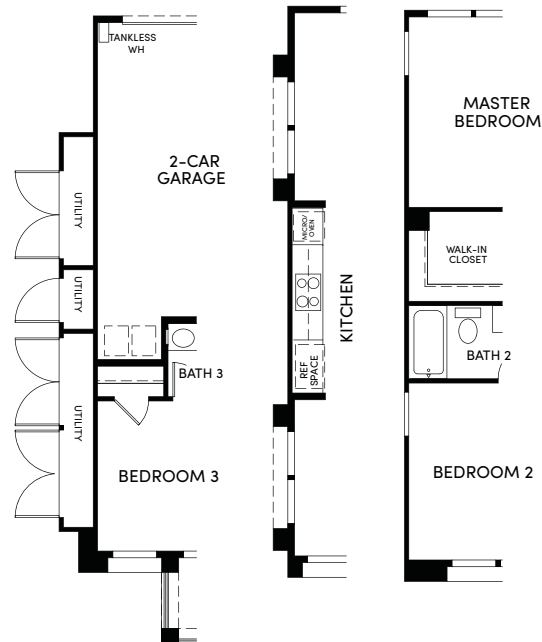


FIRST FLOOR

SECOND FLOOR

THIRD FLOOR

2E

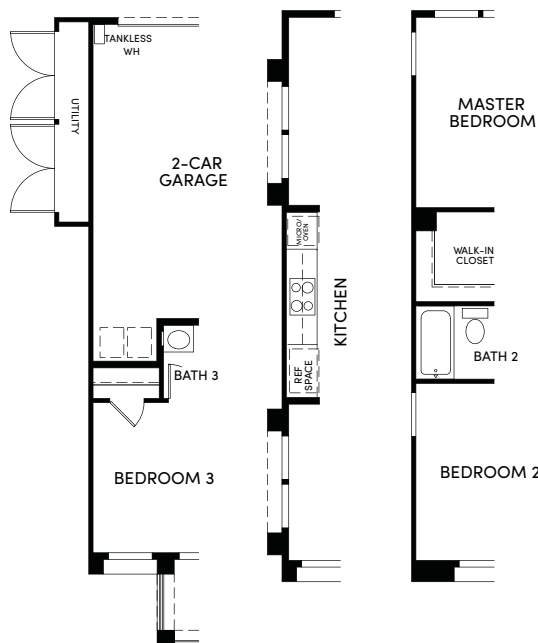


FIRST FLOOR

SECOND FLOOR

THIRD FLOOR

2MA

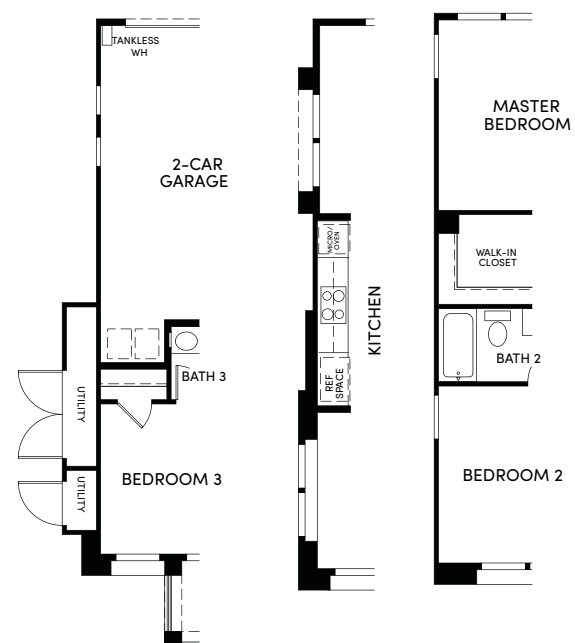


FIRST FLOOR

SECOND FLOOR

THIRD FLOOR

2MB

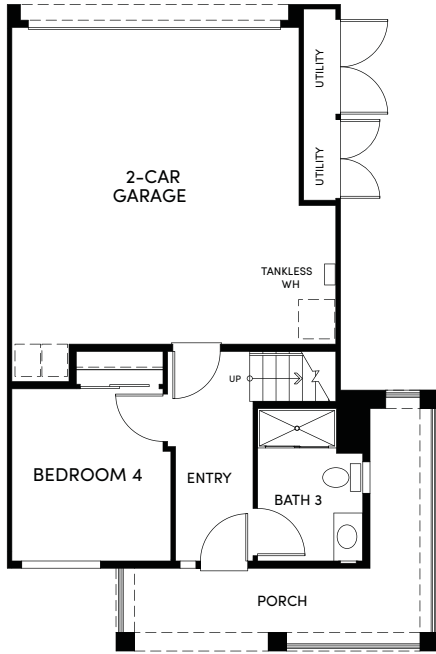


FIRST FLOOR

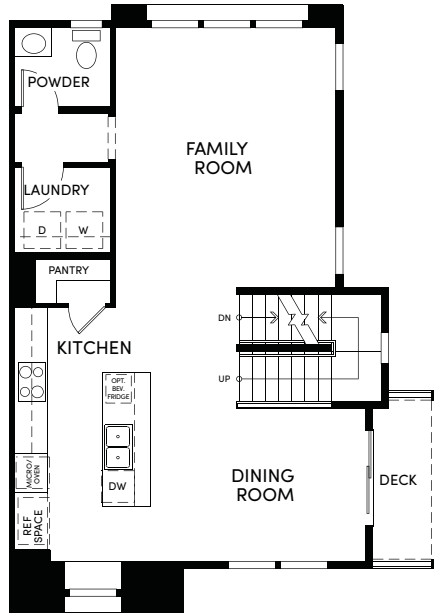
SECOND FLOOR

THIRD FLOOR

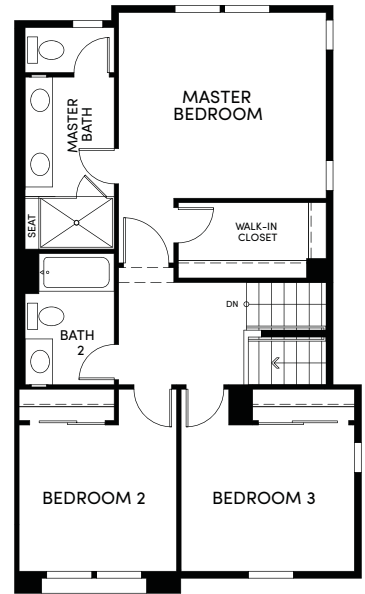
2MC



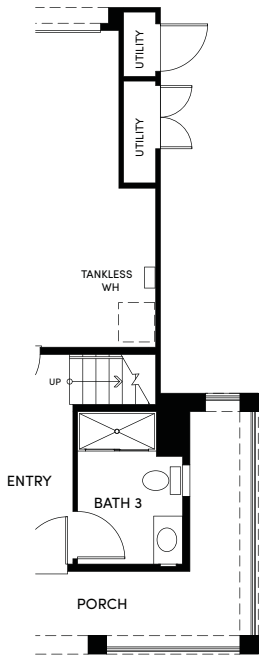
FIRST FLOOR



SECOND FLOOR

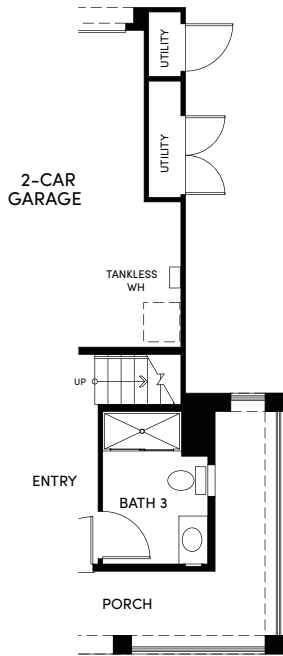


THIRD FLOOR



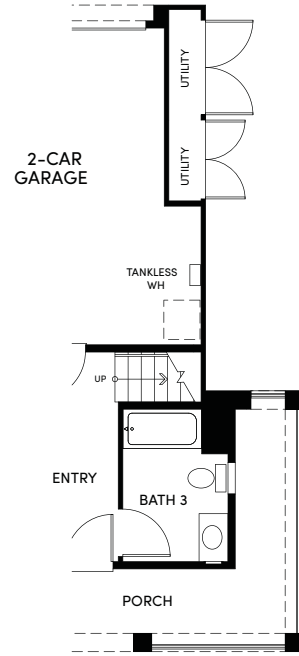
FIRST FLOOR

3A



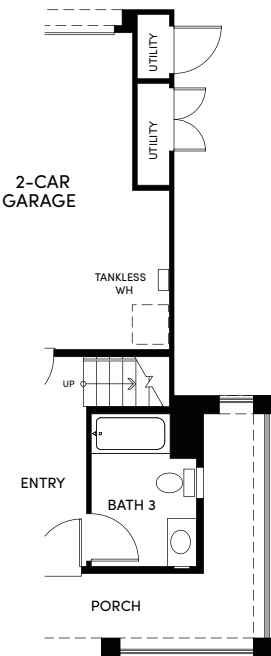
FIRST FLOOR

3B



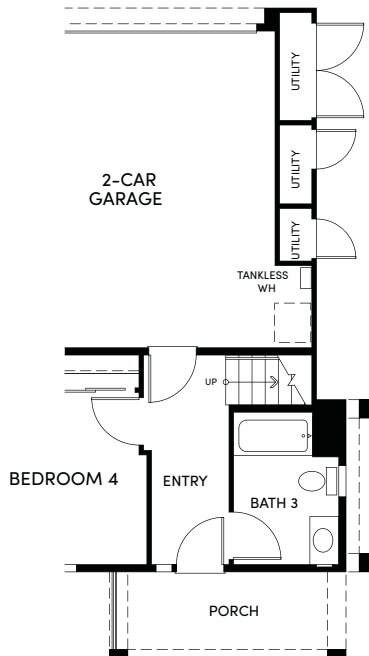
FIRST FLOOR

3X



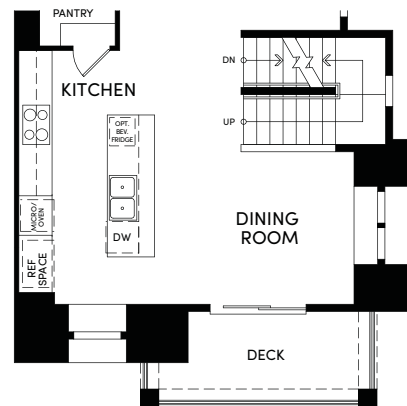
FIRST FLOOR

3XA



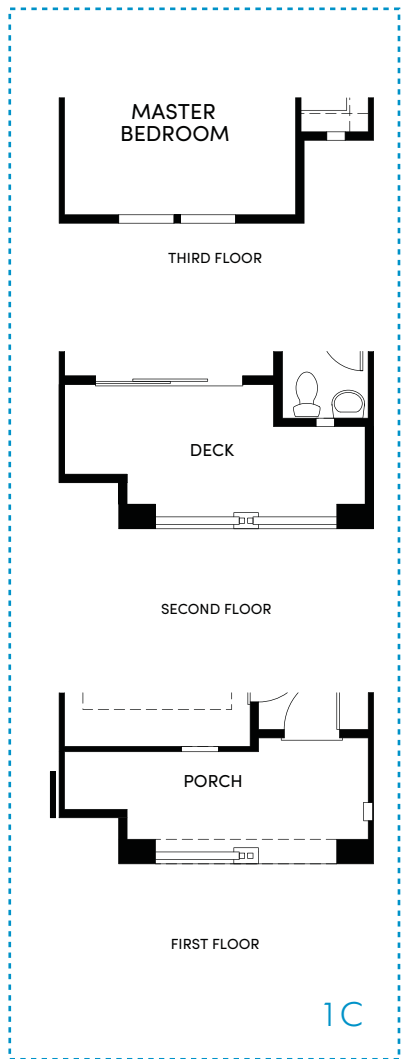
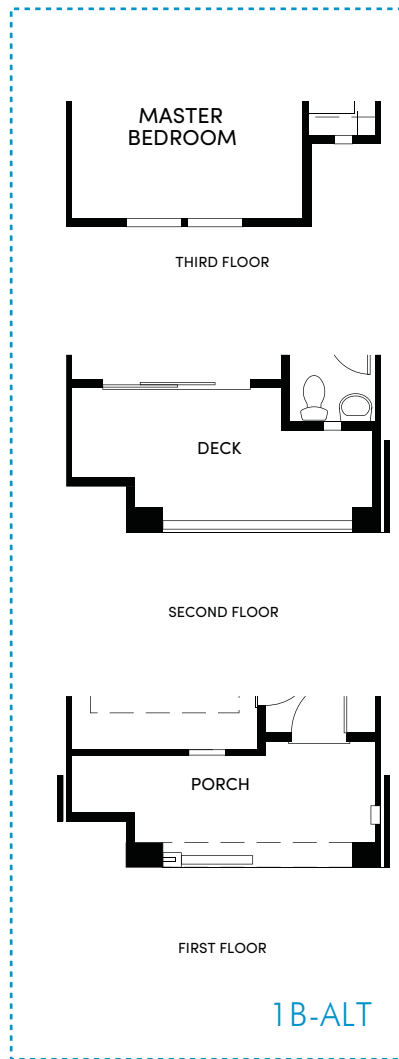
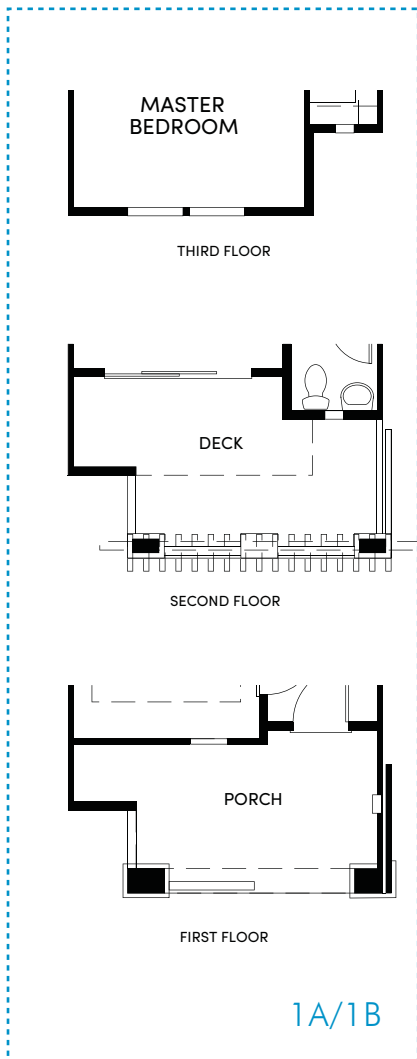
FIRST FLOOR

3XC



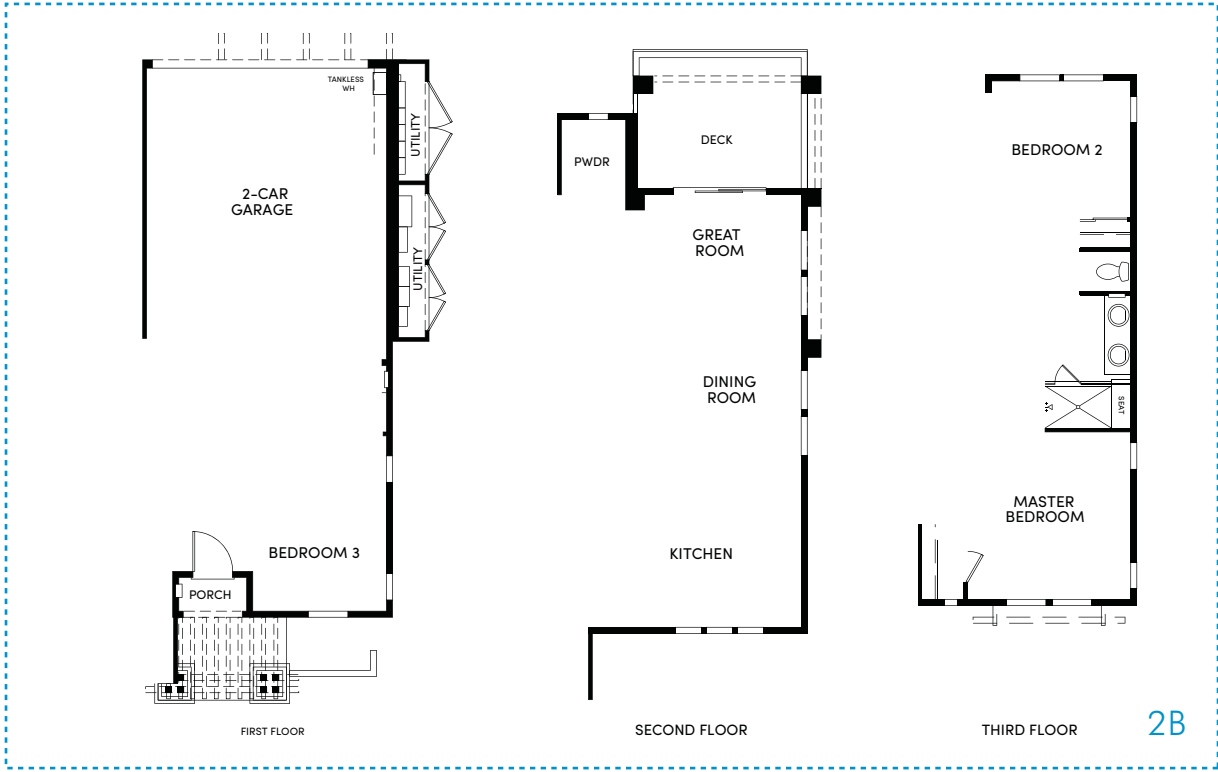
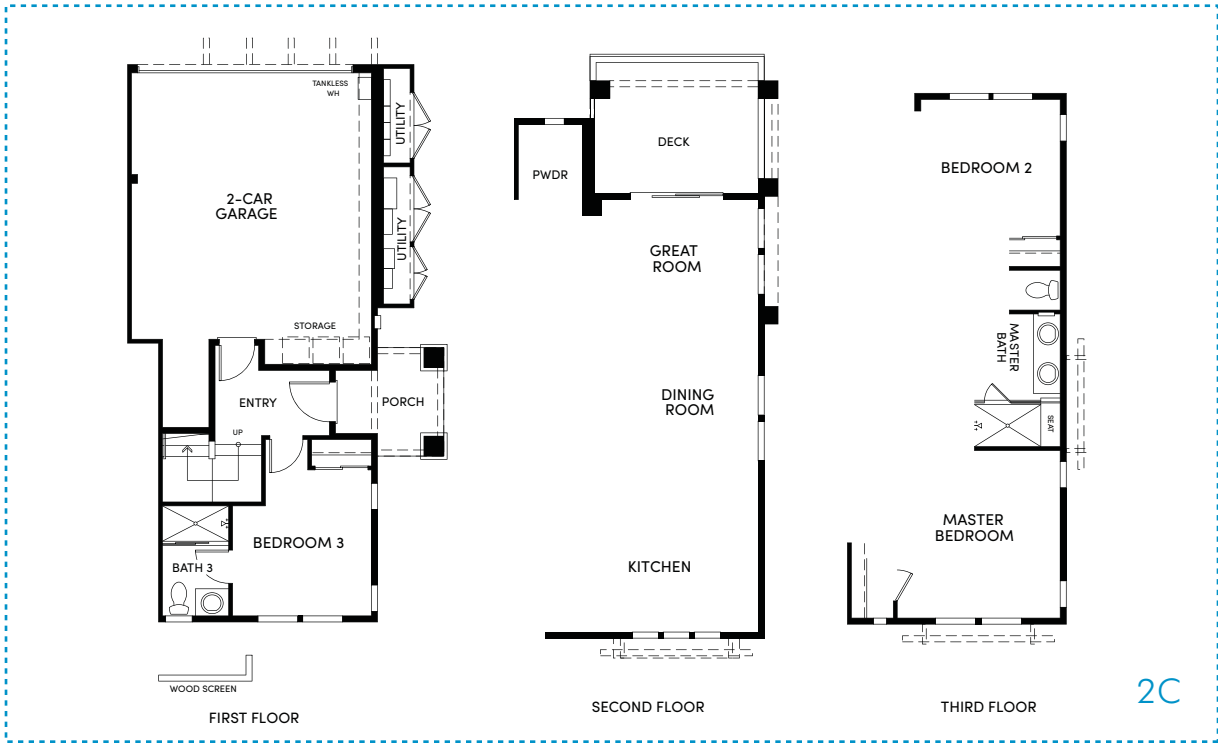
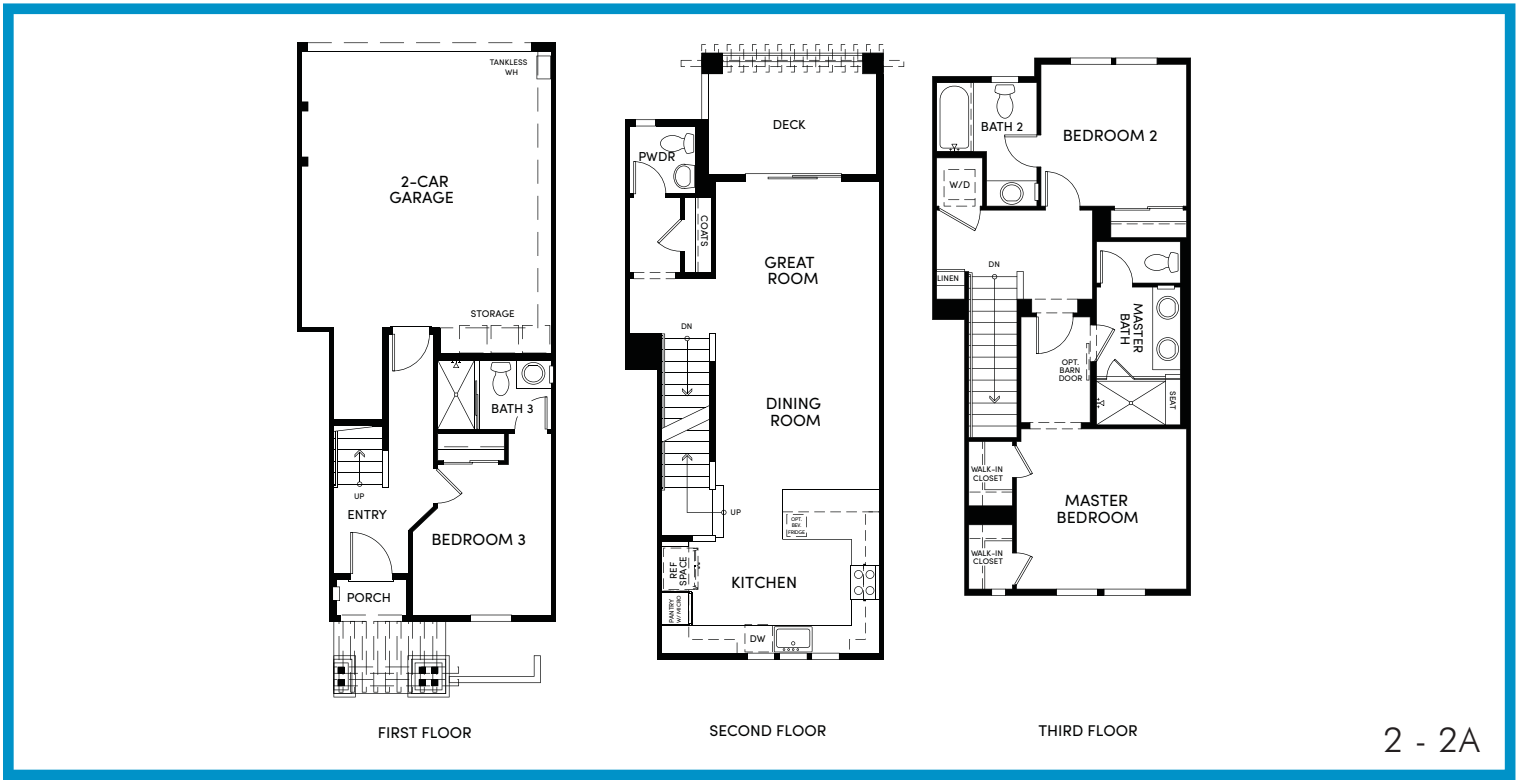
SECOND FLOOR

3XC



RESIDENCE 2M - 3 BEDROOM + 3.5 BATHS • 1,604-1,608 APPROX. SQ. FT.

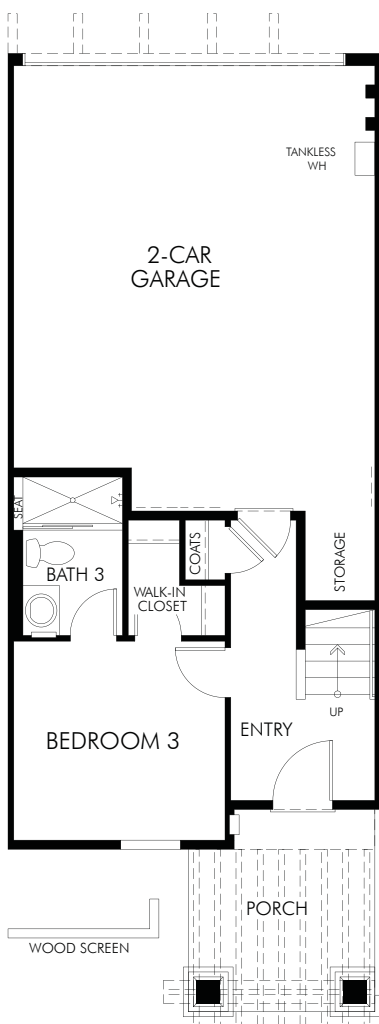
at Marquette



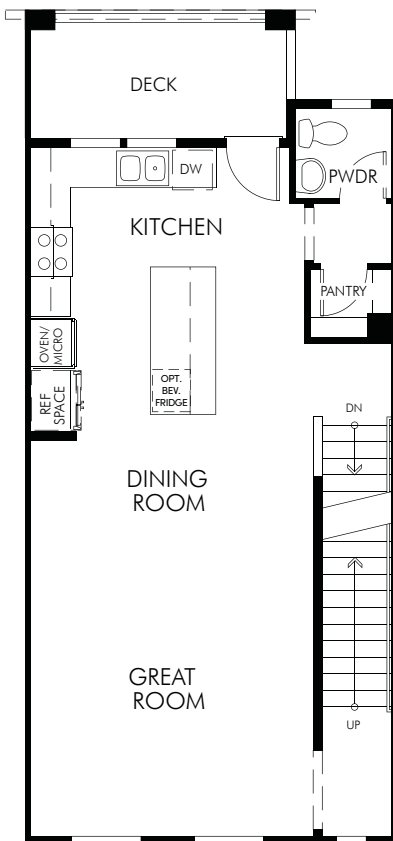
1: LOTS 43, 48 1A: LOTS 41, 50 1B: LOTS 4, 7, 9, 16, 18, 23, 25, 30, 33, 35 1B ALT: LOTS 11, 14, 21, 37 1C: LOTS 2, 28



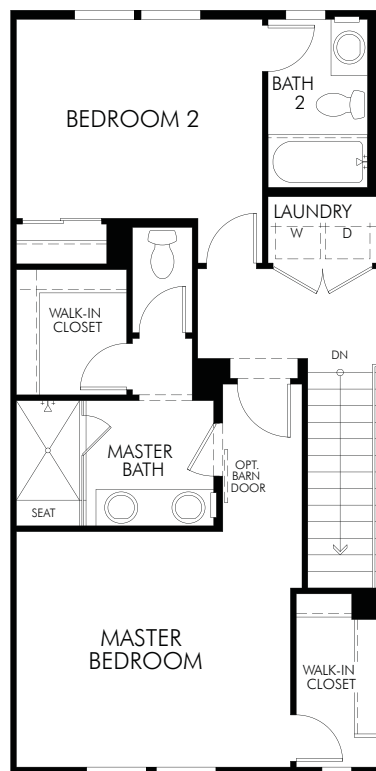
montecito



FIRST FLOOR



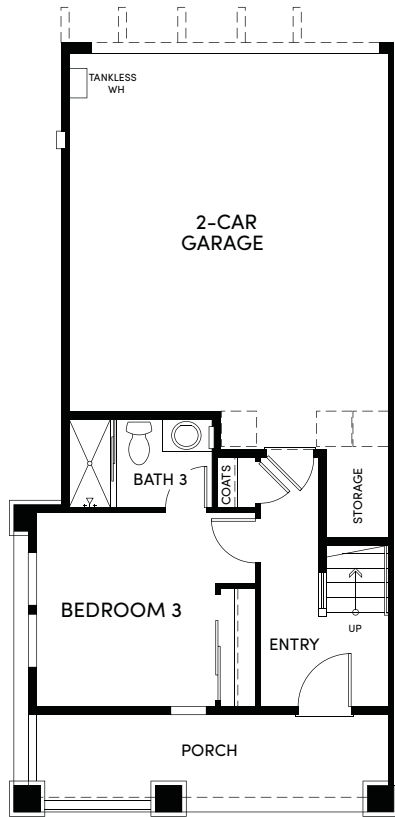
SECOND FLOOR



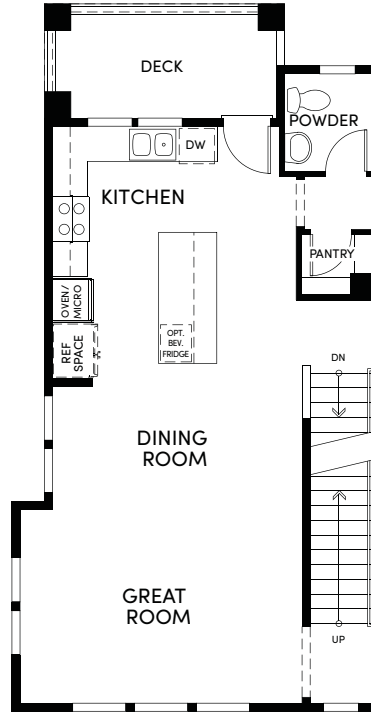
THIRD FLOOR

RESIDENCE 4M - 3 BEDROOM + 3.5 BATHS • 1,708 APPROX. SQ. FT.

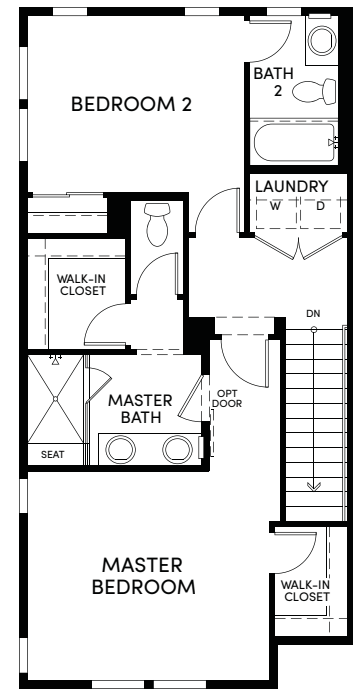
at Marquette



FIRST FLOOR

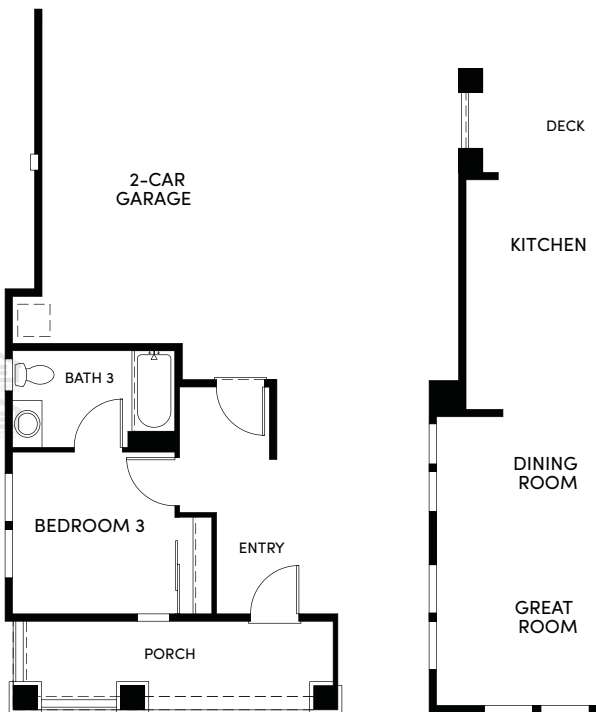


SECOND FLOOR

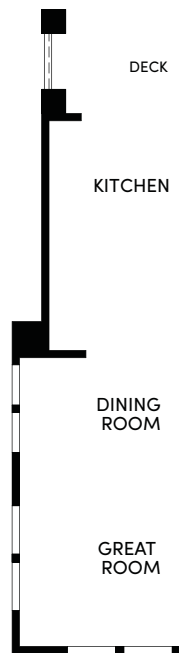


THIRD FLOOR

4

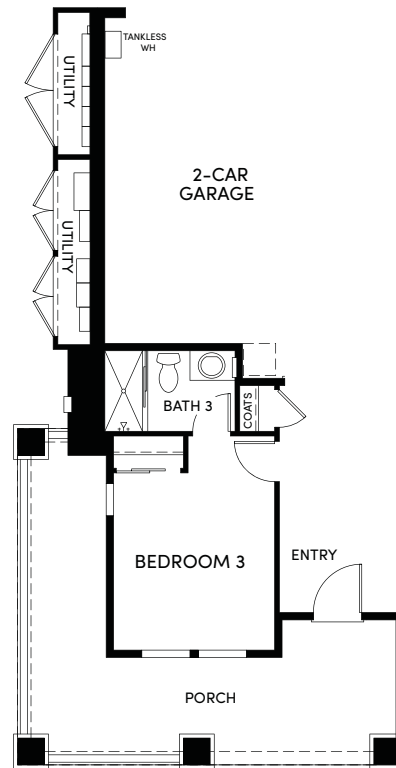


FIRST FLOOR

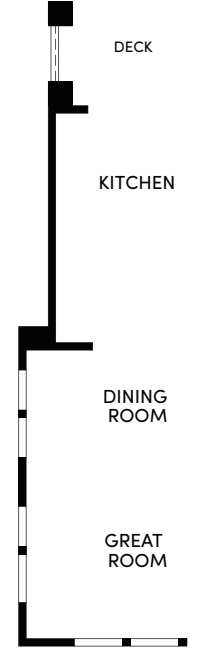


SECOND FLOOR

4X



FIRST FLOOR



SECOND FLOOR

4M

4: LOTS 19, 26

4M: LOTS 39, 52

4X: LOTS 5, 6, 3, 32, 45, 46 (ACCESSIBLE)



montecito